



Public Joint Stock Company
**"Pinsk Plant of Small Mechanization
Means" (PJSC "SMM")**

17 Kozubovsky St., Pinsk 225710, Brest Region, the Republic
of Belarus



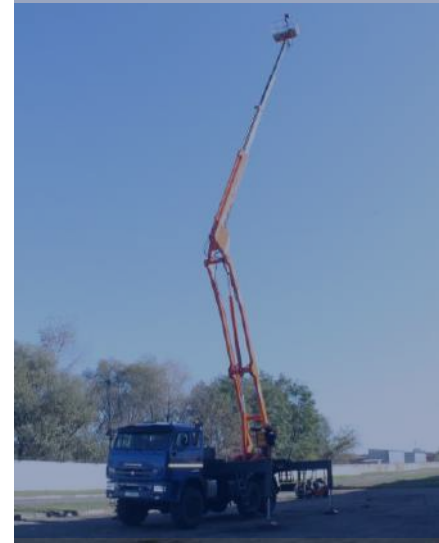
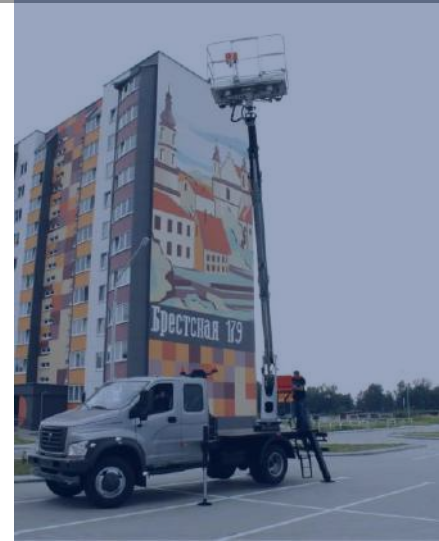
smm05@mail.ru



+375 44 502 21 00



pinksmm.by





About the company

Public Joint Stock Company "Pinsk Plant of Small Mechanization Means" was established in Pinsk, in 1986. The company has been manufacturing and selling **aerial work platforms (или mobile elevating work platforms (MEWPs))** for almost 40 years.

Main activity:

- Design and production mobile elevating work platforms :
- The development of models with various lifting capacities and lifting heights.
 - The use of modern technologies to increase safety and efficiency.
- Repair and maintenance:
- Performing technical maintenance.
 - Providing services for the modernization and restoration of equipment

Main types of products

✓ Telescopic mobile elevating work platforms



- Lifting height: 14 to 28 meters
- На базе шасси МАЗ, КамАЗ, Урал, ГАЗ
- MAZ, KamAZ, Ural, GAZ chassis-based



Main types of products

✓ Articulated mobile elevating work platforms



- Lifting height: 12 to 28 meters
- MAZ, KamAZ, Ural, GAZ chassis-based



Main types of products

✓ Articulated-telescopic mobile elevating work platforms

- Lifting height 22 meters
- GAZ chassis-based
- Lifting height 36 meters
- KamAZ chassis-based





Main types of products

✓ Trailer Mounted Boom Lifts



Trailer Mounted Boom Lift BC -12P

Articulated, lifting height 12 meters



Trailer Mounted Boom Lift BC 18P

Telescopic, lifting height 18 meters



Scissor Lift BC-10

Lifting height 10 meters

Agricultural products



Orchard platform PN-302

Operational height - 4,5 meters

Load capacity - 2 ton



The orchard platform is designed for harvesting and pruning fruit tree crops. It is made of steel, featuring protective sides around the perimeter of the platform. It has a universal traction coupling device that allows attaching the orchard platform to various tractor models. It is designed for operation at ambient air temperatures from minus 40° C to plus 40° C



Promising developments



Telescopic Handler PT-3010

- lifting height 9,9 meters
- Max. Load capacity at max. height - 1500 kg

Other products



✓ Drainage flushing unit UPD-120

- It is intended for use in the agro-industrial complex for flushing heavily polluted drainage systems on reclaimed lands



✓ Milling-rotary snow plough SNR-200

- It can be used to remove snow banks formed by bulldozers and snow ploughs. If necessary, SNR-200 can provide snow throwing or laying it in shafts.

We provide services in the following areas:

- **Metal cutting**
- **Metal bending (max 6m*8mm)**
- **Plasma metal cutting (max 1.5m*6m)**
- **Galvanizing of parts (max 960mm)**
- **Manufacture of high-pressure hoses (HPF)**
- **Production of metal structures according to drawings Customer**
- **Repair of auto-hydraulic lifts and backhoe loaders**

Оказываем услуги



Public Joint Stock Company
"Pinsk Plant of Small Mechanization Means" (PJSC
"SMM")

17 Kozubovsky St., Pinsk 225710, Brest Region, the
Republic of Belarus
UNP 200250986 ОКПО 05801503
p/c BY51BAPB30124703800110000000
JSC Belagroprombank, Pinsk
BIC: BAPBB42X

Reception: Tel/Fax: +375 165 63 30 84
e-mail: smm05@mail.ru
Marketing and Sales Department: +375 165
63 29 90, +375 165 63 26 81
+375 44 502 21 00



17 Kozubovsky St., Pinsk 225710, Brest Region, the Republic
of Belarus



smm05@mail.ru



+375 44 502 21 00



pinksmm.by



Made in Belarus - reliability proven by height